

# Business Continuity & Pollution's Peak

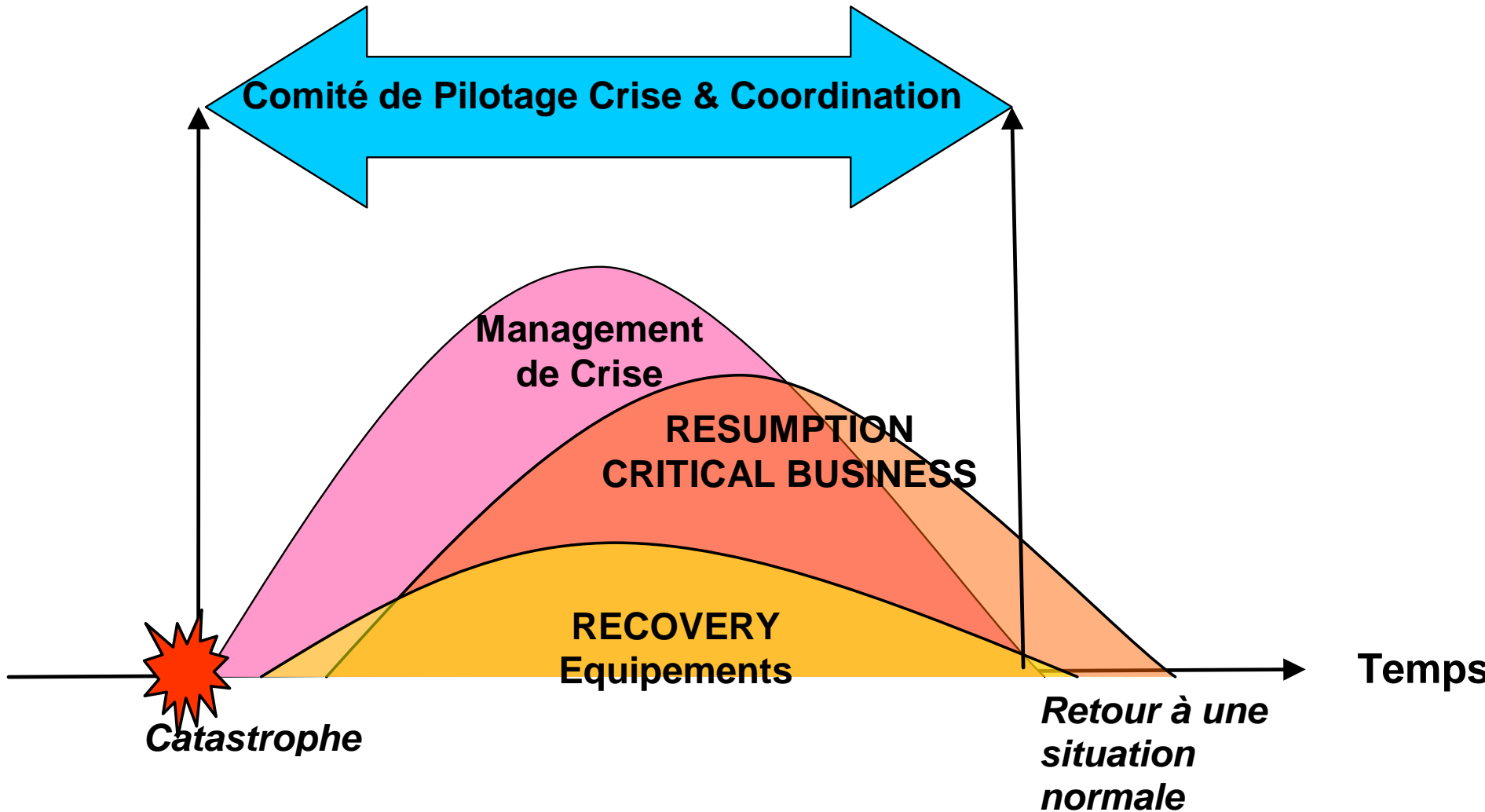
Laurent Depauw



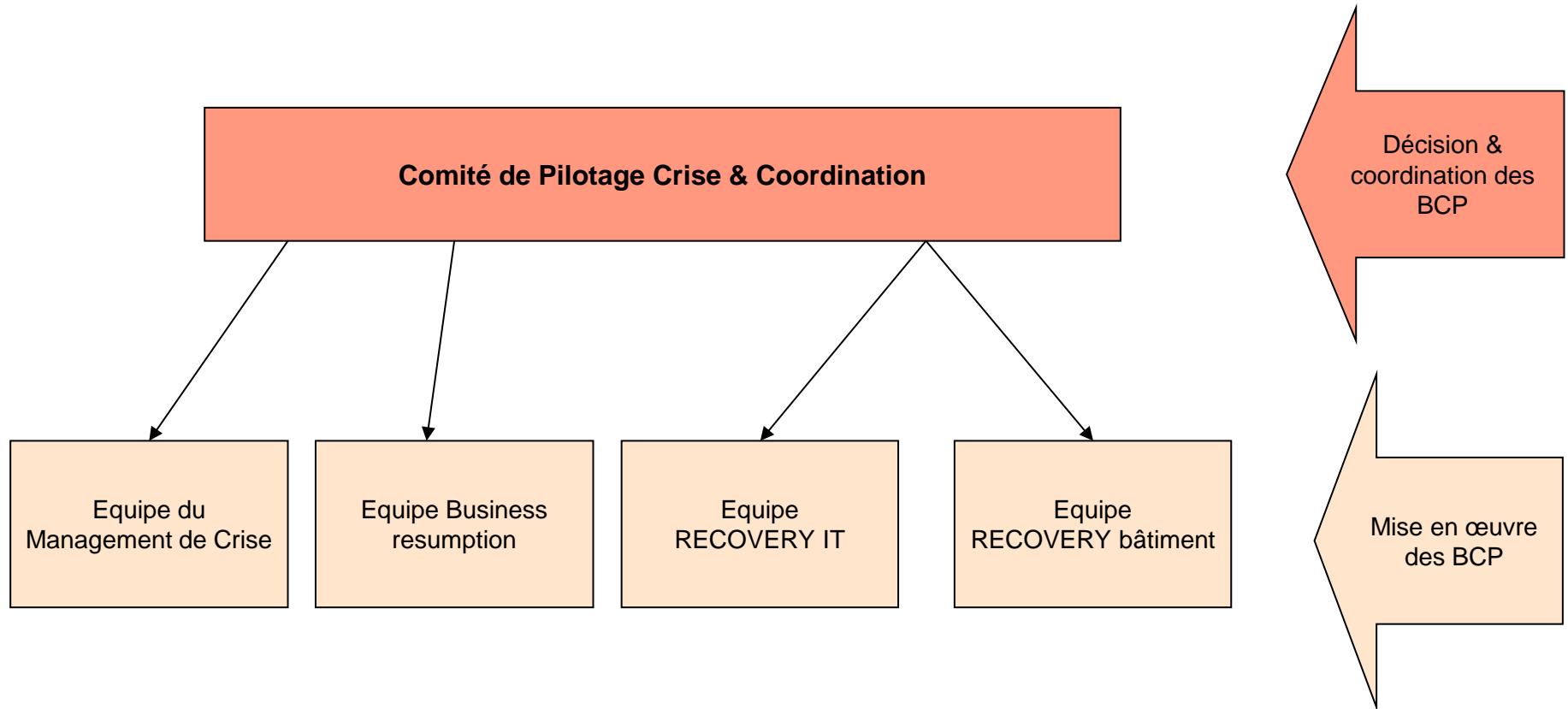
1

- 1 Business continuity management**
- 2 Organization - Prevention
- 3 Lessons & Learn
- 4 Questions

# Business continuity



# BCM Organization



# 2

- 1 Business continuity management
- 2 Organization - Prevention**
- 3 Lessons & Learn
- 4 Questions

## Organization and Prevention

BCM Organization: We make exercises with the BCM teams.

The “Comité de pilotage de crise & Coordination” is the first committee who will act.

Teleworking :

We have a strategy to give the Teleworking opportunity at our staff (after a HR validation).

Mobility Plan:

As we are near the center of the city, we take advantage of all the transport's infrastructure. (see our Plan - Copy)

Staff contact list:

We maintain the list of communication's details off our staff



# 3

- 1 Business continuity management
- 2 Organization - Prevention
- 3 Lessons & Learn**
- 4 Questions

## Lessons & Learn

Internet page: We plan to set up a Internet page to support communication to our staff

SMS tool:

We have set up a SMS tool on internet to send SMS messages to our staff efficiently

Carpooling list:

We maintain the list of our staff concerning the carpooling (offers, needs, ...)

Communications library: we maintain a library with sample of message (emails, sms,...) to be used in case of emergency



# 4

- 1 Business continuity management
- 2 Organization - Prevention
- 3 Lessons & Learn
- 4 Questions**

## 4. Questions?



## Euler Hermes Belgium

Avenue des Arts 56 - Kunstlaan 56  
B - 1000 Bruxelles, Brussel  
Belgique, België

5th floor

+32 2 289 31 11

info.belgium@eulerhermes.com

Euler Hermes Belgium is located close to the European parliament and near to the center of Brussels.

It's only 2 minutes of the metro station Trône-Troon. You can easily come by foot or bicycle, a dedicated parking for bicycle is present inside the building.

